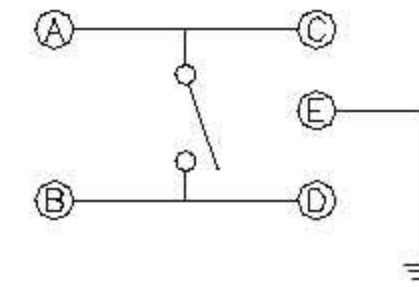
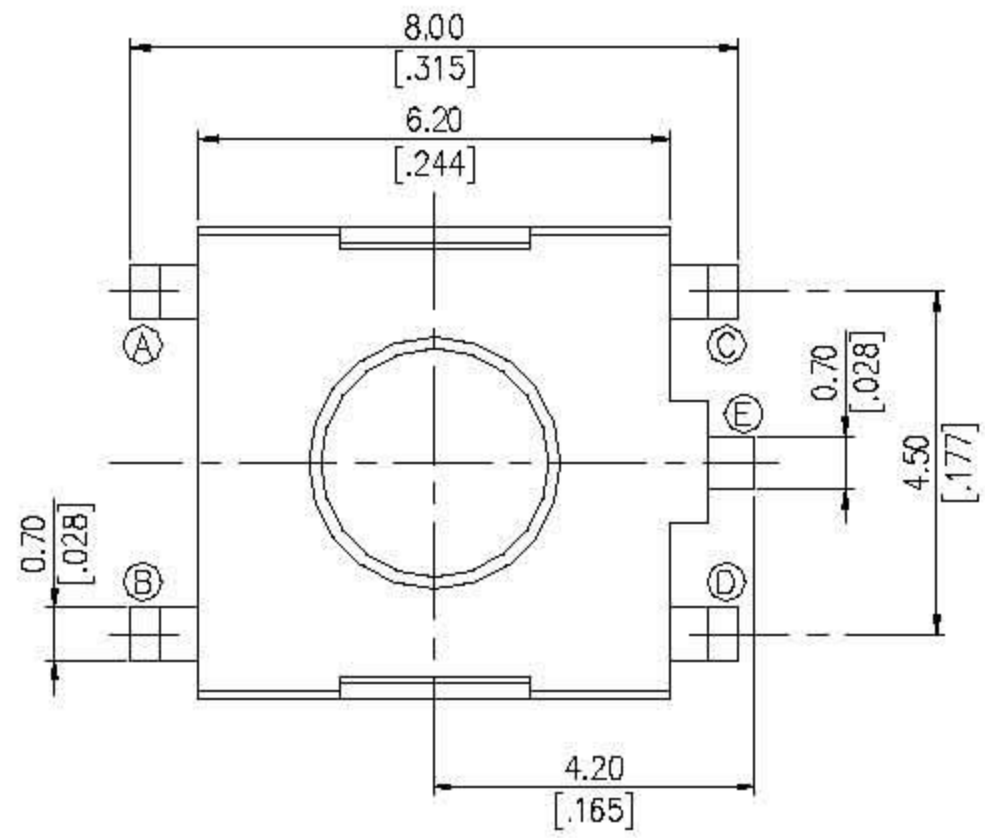


# DTSGZM(P).DTSYH-6 SERIES

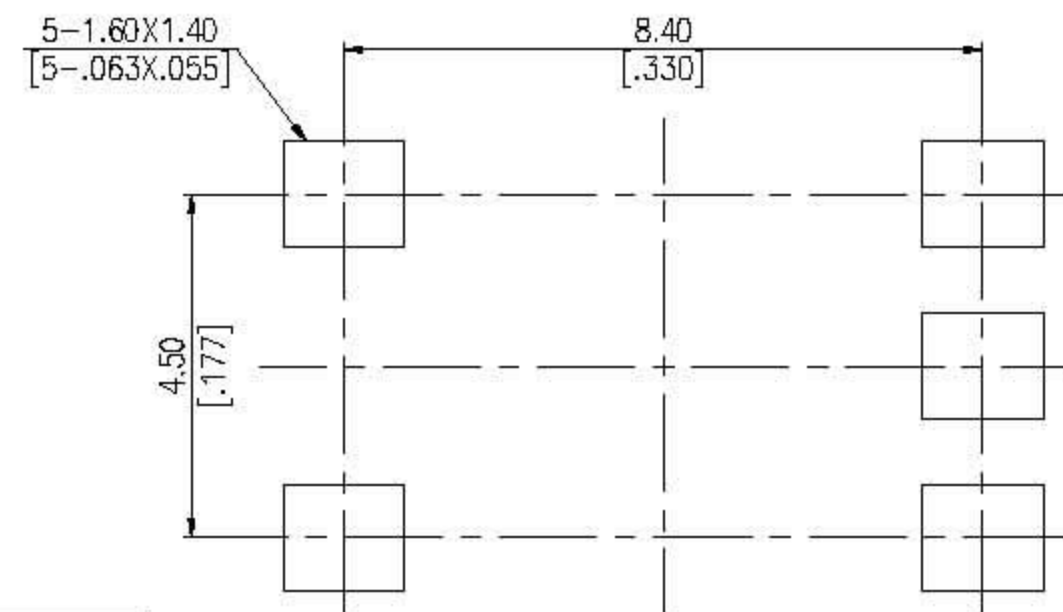
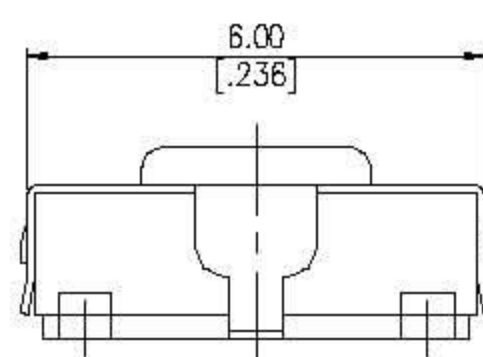
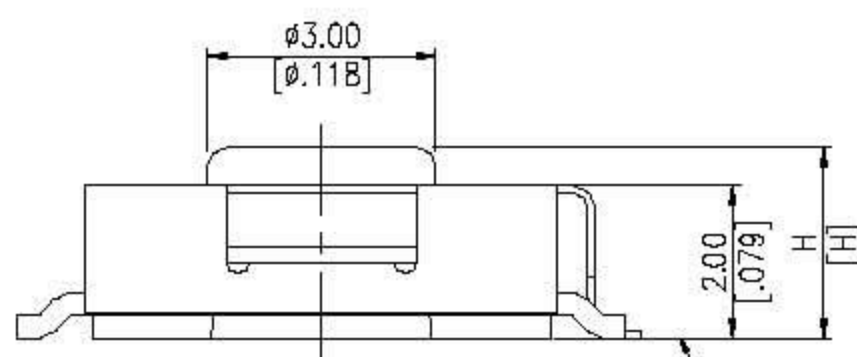


## DIMENSIONS

### DTSGZM-6



CIRCUIT DIAGRAM

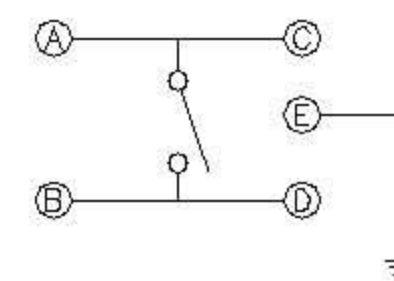
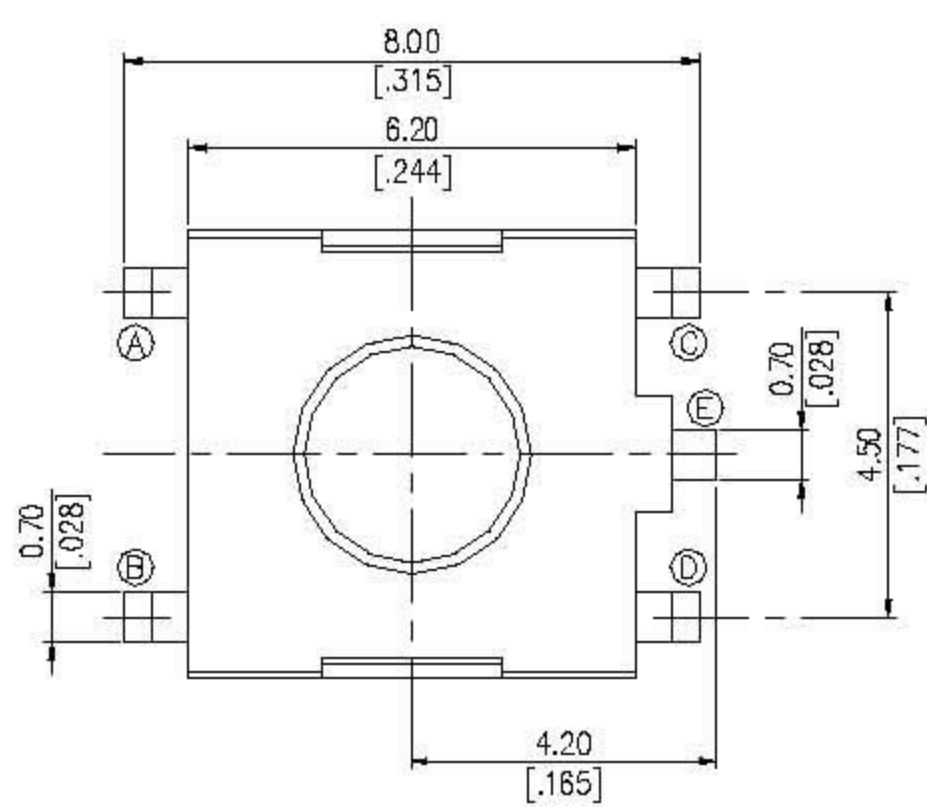


P.C.B. LAYOUT

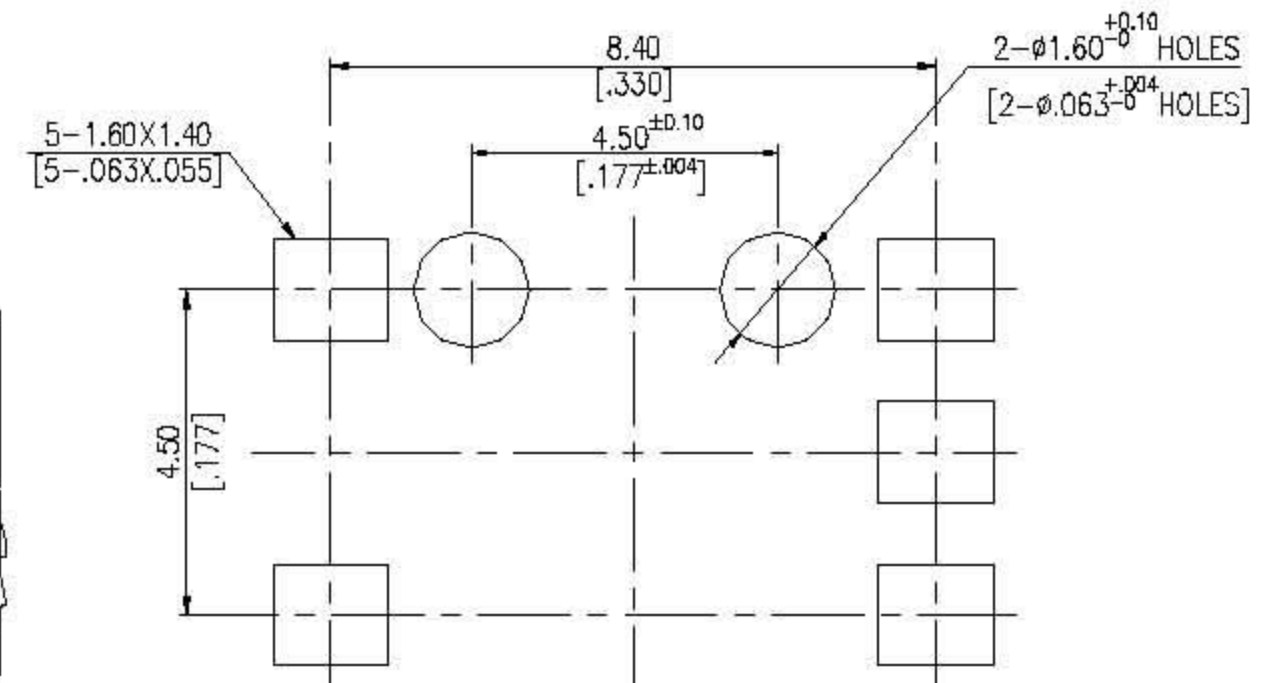
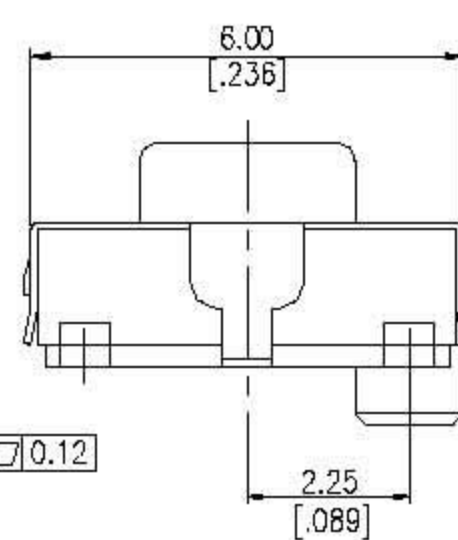
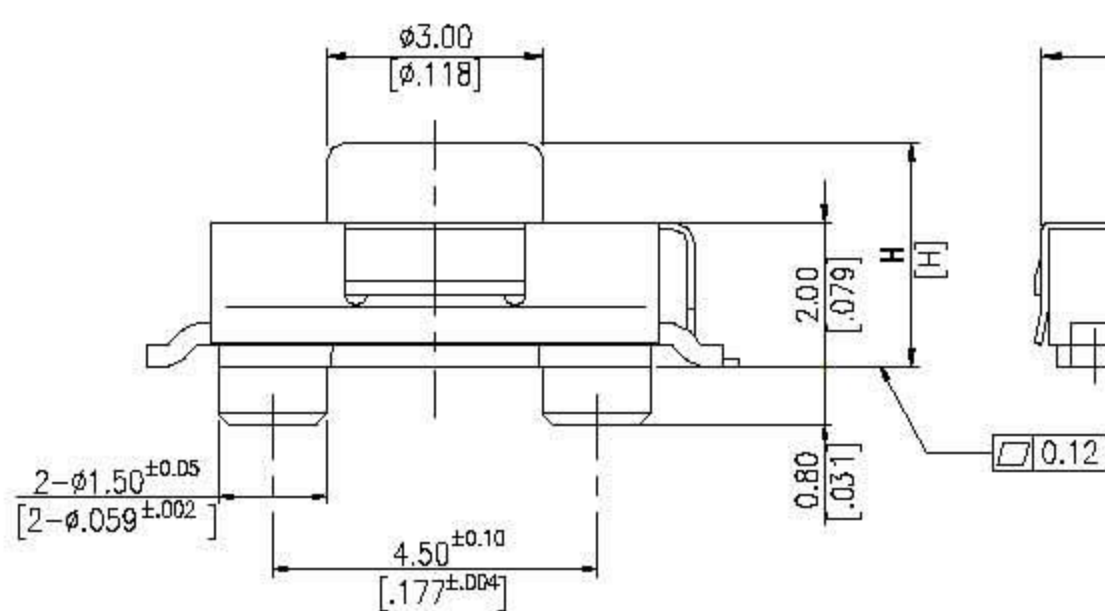
DTSGZM-62	3.1mm [.122]
DTSGZM-61	2.5mm [.098]
PART NO.	H

General Tolerance : ±0.2mm

### DTSGZMP-6



CIRCUIT DIAGRAM

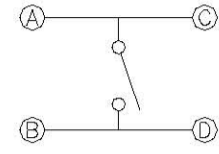
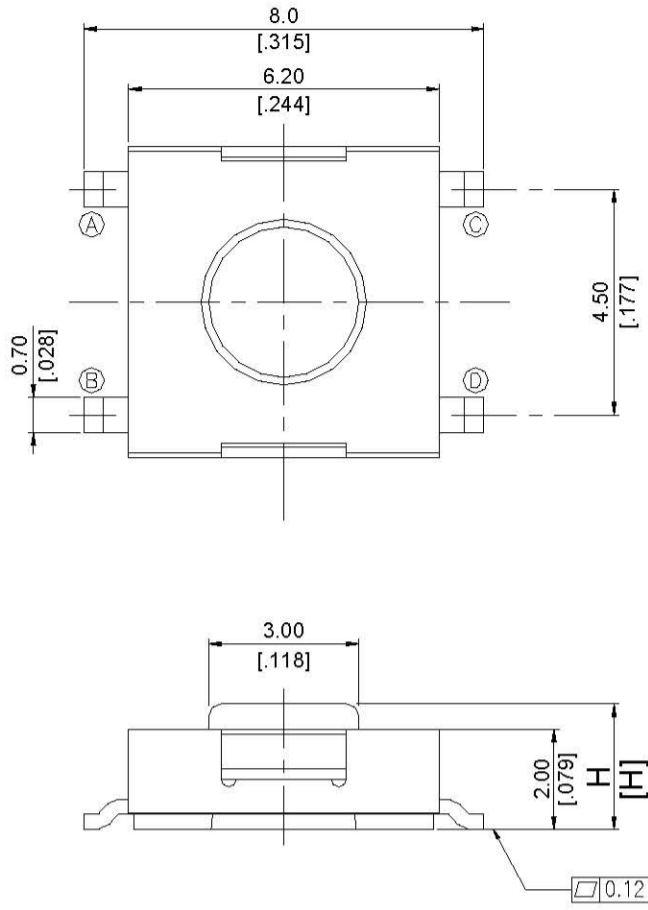


P.C.B. LAYOUT

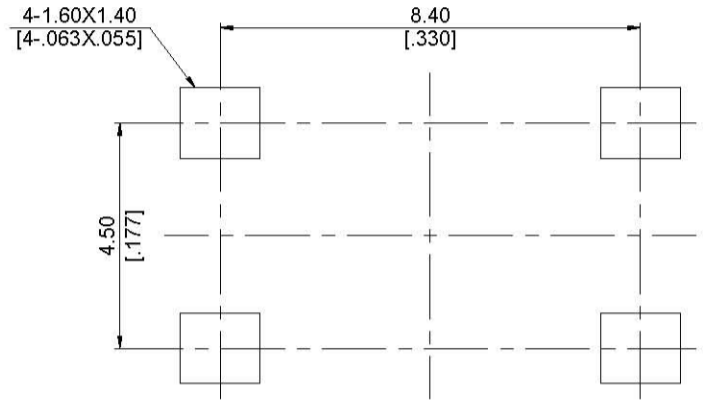
DTSGZMP-62	3.1 [.122]
DTSGZMP-61	2.5 [.098]
PART NO.	H

General Tolerance : ±0.2mm

**DTSZM-6**



**CIRCUIT DIAGRAM**

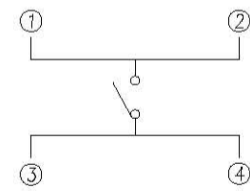
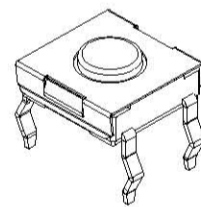
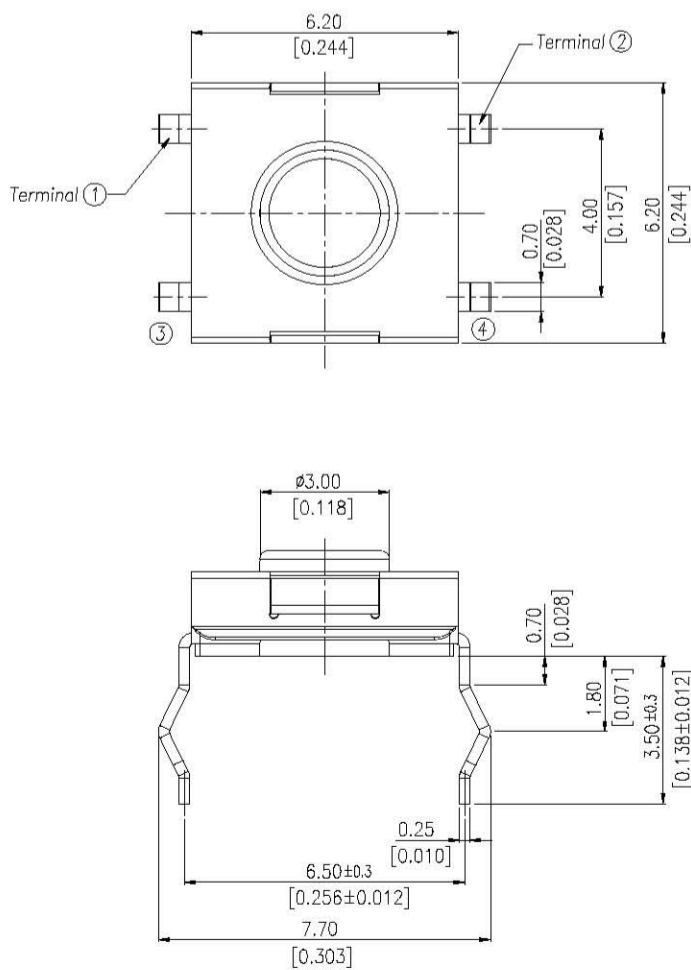


**P.C.B. LAYOUT**

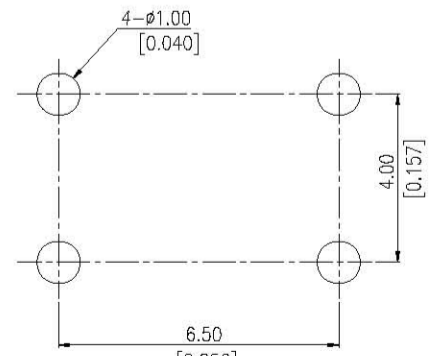
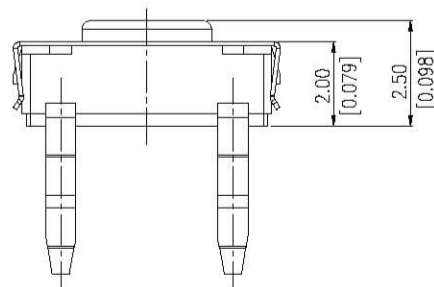
DTSZM-62	3.1mm[.122]
DTSZM-61	2.5mm[.098]
PART NO.	H

General Tolerance :  $\pm 0.2\text{mm}$

**DTSYH-6**



**CIRCUIT**



**P.C.B. LAYOUT**

General Tolerance :  $\pm 0.2\text{mm}$

## HOW TO ORDER

DTS     -    -  -

### Package Style:

B = Tube <Except DTSZMP-6>

T/R = Tape & Reel <Except DTSYH-6>

### Soldering:

V = Lead Free solderable

### Color of Stem for Operation Force:

K = Black, 100gf

N = Brown, 160gf

R = Red, 260gf

### Height:

1 = 2.5mm

2 = 3.1mm

### Prod size

6 = 6X6mm

### Alignment Pin

= Without Post

P = With Post (S.M.T Only)

### Terminal Type

M = S.M.T

H = Through Hole Terminal

### Terminal Pitch

Y = Terminal Pitch 4.0mm

(Through Hole Only)

Z = Terminal Pitch 4.5mm

### Product Series:

G = With Ground Terminal

(DTSGZM-6 Only)

= Without Ground Terminal

## SPECIFICATION

### △MECHANICAL

Operation Force: 100±50gf Black(K)

160±50gf Brown(N)

260±50gf Red(R)

Stroke: 0.25+0.2/-0.1mm

Operation Temperature: -25°C to +70°C

Storage Temperature: -30°C to +80°C

### △ELECTRICAL

Electrical Life: 100,000 cycles for 260gf

200,000 cycles for 100gf,160gf

Rating : 50 mA , 12 VDC

Contact Resistance : 100mΩ max

Insulation Resistance : 100MΩ min , at 500 VDC

Dielectric Strength : 250 VAC / minute

Contact Arrangement : 1 pole 1 throw

## MATERIAL

△COVER: Stainless steel (DTSYH-6,DTSZM-6)

Nickel Silver (DTSGZM-6)

△BASE: UL 94V-0 Nylon High-temp thermoplastic

Color: Black

△CONTACT DISC: Stainless steel with silver cladding

△TERMINAL: Brass with silver plated

△STEM : UL94V-0 Nylon High-temp Thermoplastic

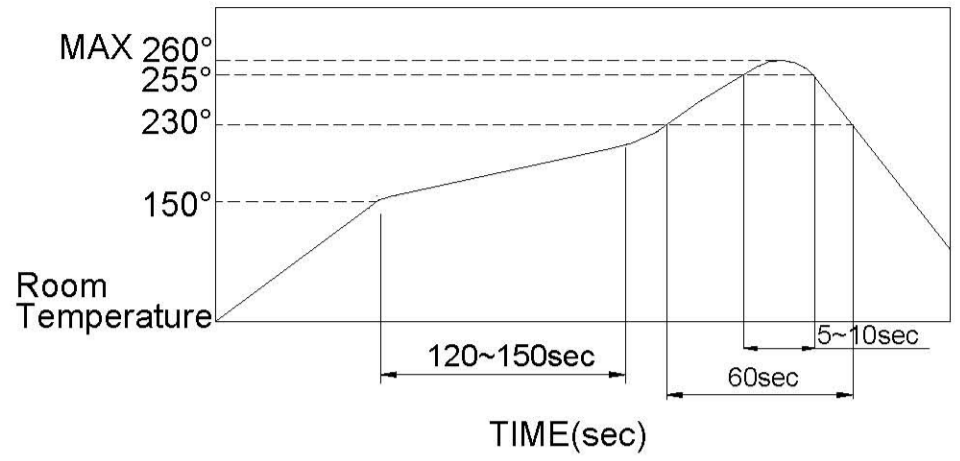
Color : Black(100gf) , Brown(160gf) , Red(260gf) ,

# SOLDERING PROCESS

△HAND SOLDERING : Use a soldering iron of 30 watts, controlled at 350°C approximately max 5 seconds while applying.

△REFLOW SOLDERING: When applying reflow soldering, the peak temperature or the reflow oven should be set to 260°C max.

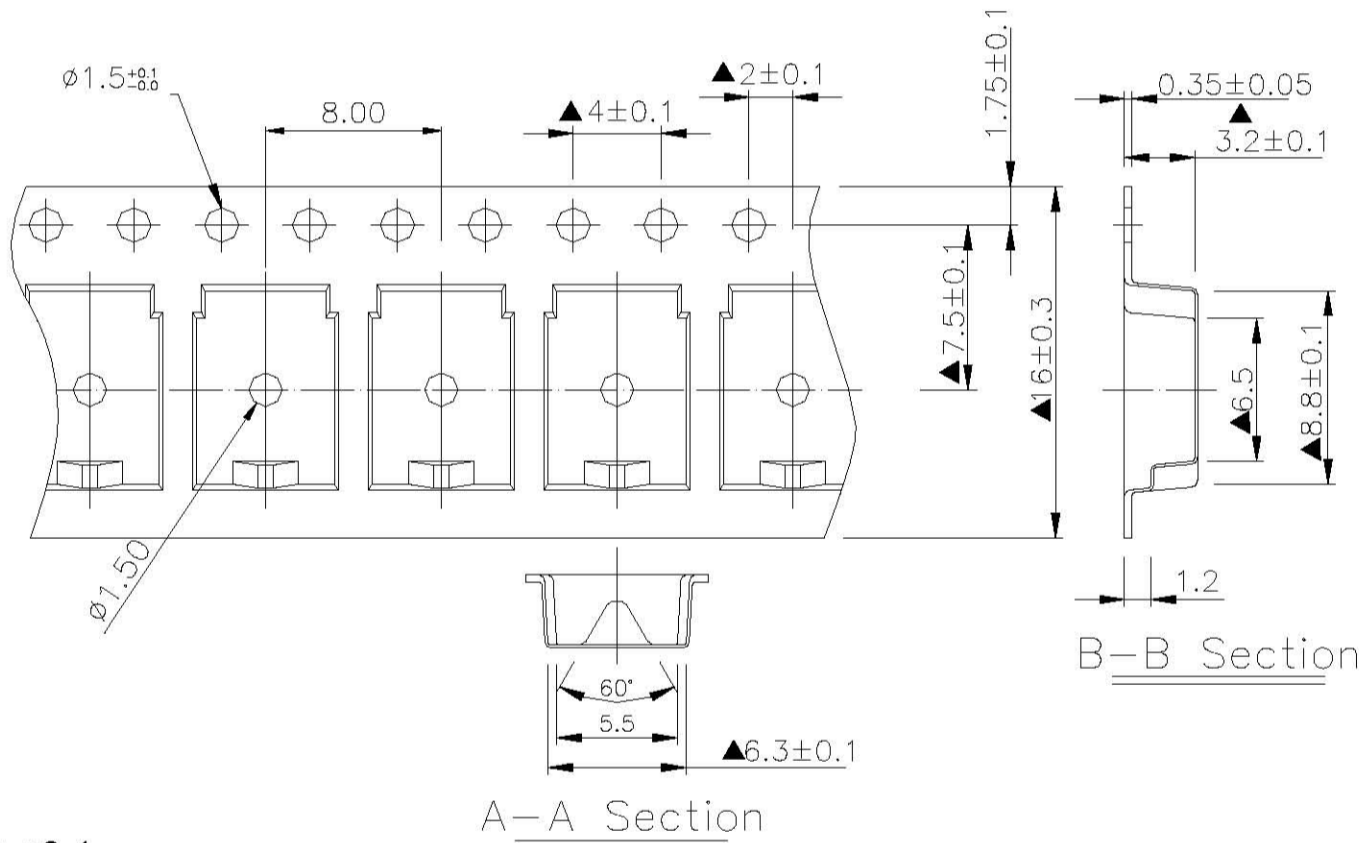
△Reflow Temperature Profile:



# PACKING

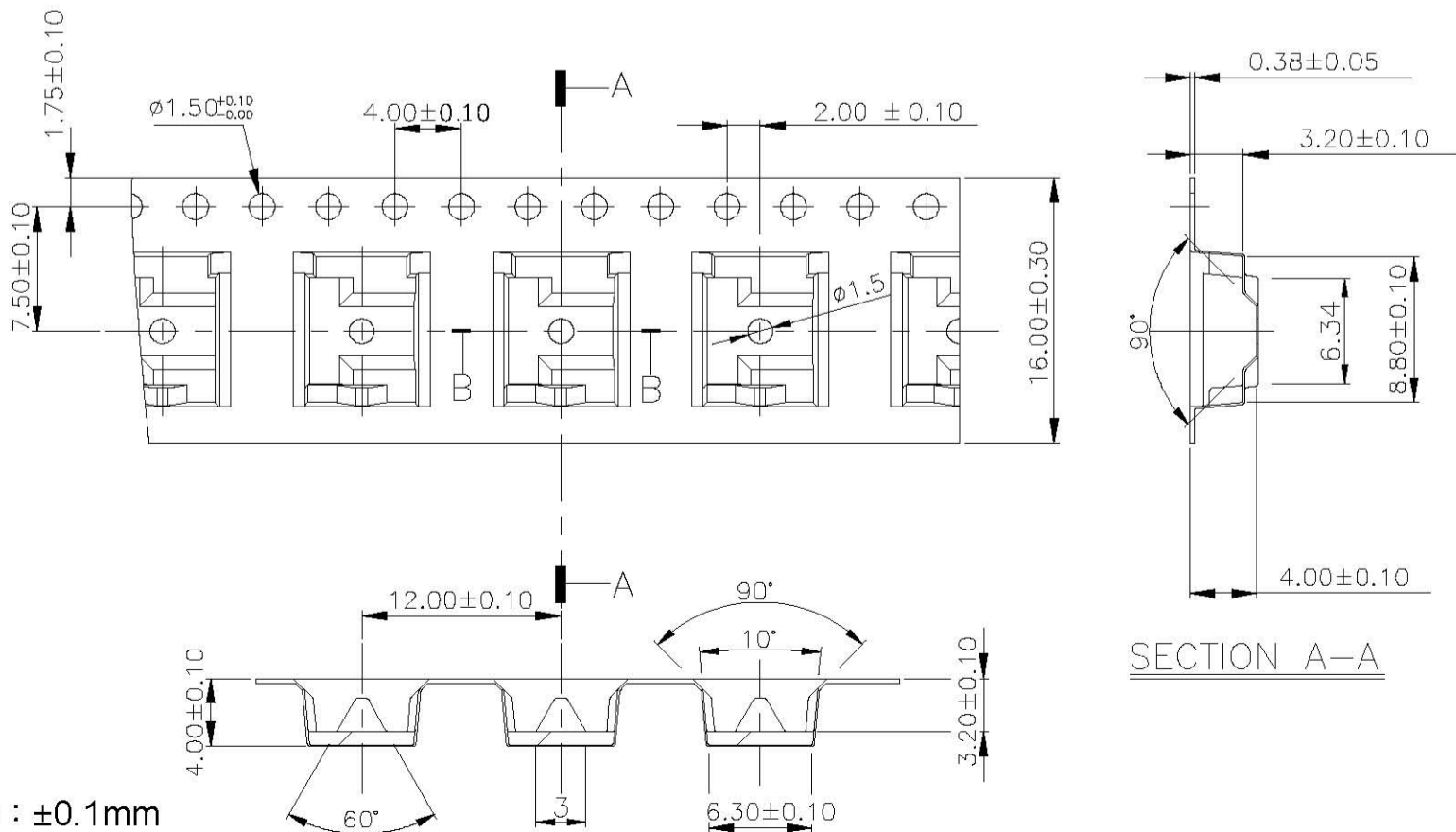
Part Number	Number Per Tube	Number Per Reel
DTS(G)ZM-61	75	2500
DTS(G)ZM-62	75	2500
DTSGZMP-61	-	1400
DTSGZMP-62	-	1400
DTSYH-61	75	-

## DTSGZM-6 REEL



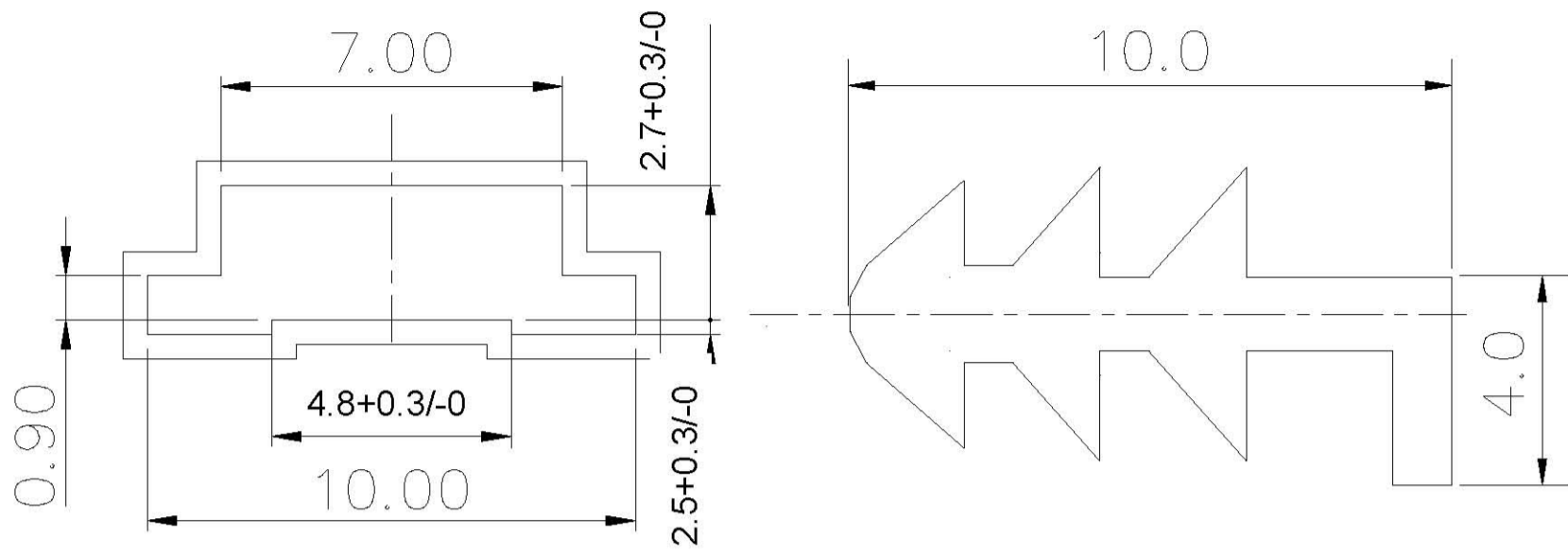
General Tolerance :  $\pm 0.1\text{mm}$

## DTSGZMP-6 REEL



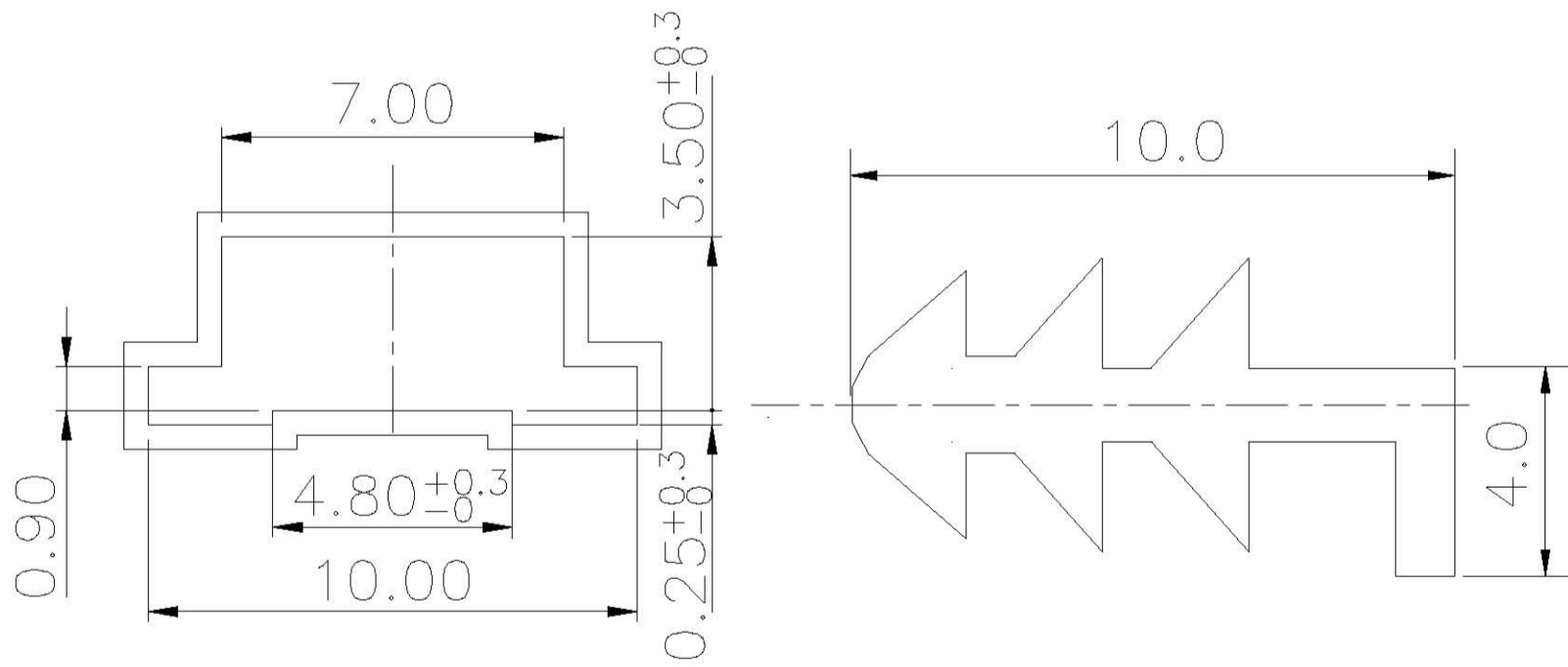
General Tolerance :  $\pm 0.1\text{mm}$

DTSGZM-61 TUBE



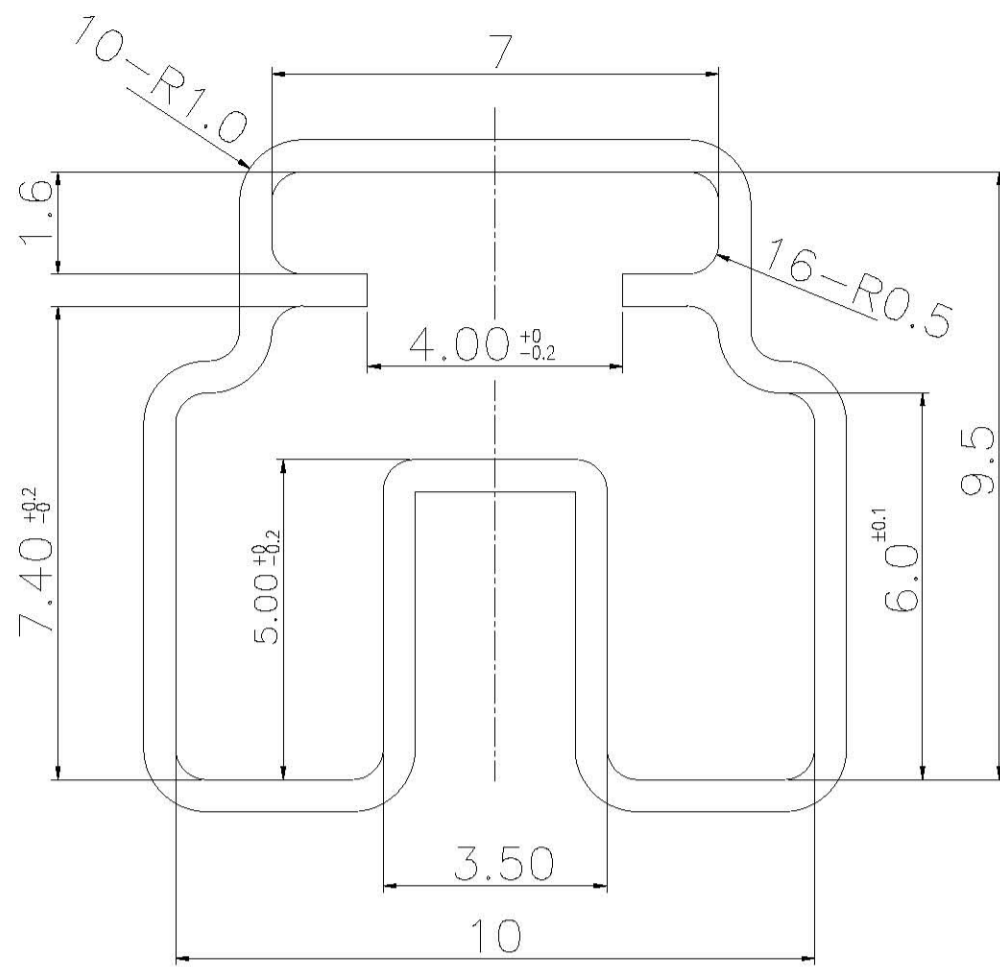
General Tolerance :  $\pm 0.2\text{mm}$

DTS(G)ZM-62 TUBE



General Tolerance :  $\pm 0.2\text{mm}$

DTSYH-61 TUBE



General Tolerance :  $\pm 0.2\text{mm}$